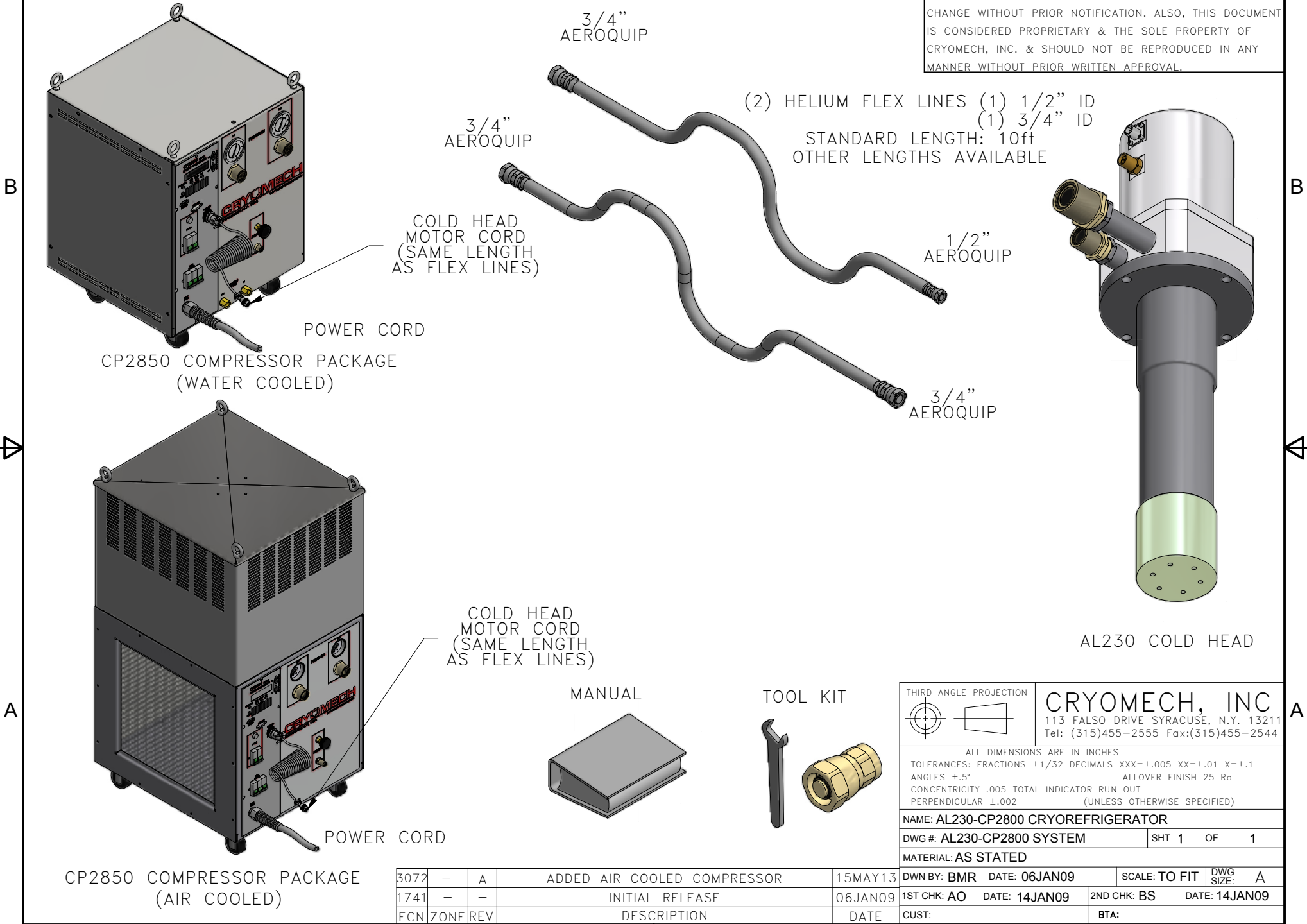


ALL INFORMATION CONTAINED IN THIS DOCUMENT SHOULD BE USED FOR REFERENCE PURPOSES ONLY & ARE SUBJECT TO CHANGE WITHOUT PRIOR NOTIFICATION. ALSO, THIS DOCUMENT IS CONSIDERED PROPRIETARY & THE SOLE PROPERTY OF CRYOMECH, INC. & SHOULD NOT BE REPRODUCED IN ANY MANNER WITHOUT PRIOR WRITTEN APPROVAL.



COLD HEAD MOTOR CORD (SAME LENGTH AS FLEX LINES)

POWER CORD

CP2850 COMPRESSOR PACKAGE (WATER COOLED)

COLD HEAD MOTOR CORD (SAME LENGTH AS FLEX LINES)

POWER CORD

CP2850 COMPRESSOR PACKAGE (AIR COOLED)

MANUAL

TOOL KIT

AL230 COLD HEAD

THIRD ANGLE PROJECTION		CRYOMECH, INC	
		113 FALSO DRIVE SYRACUSE, N.Y. 13211 Tel: (315)455-2555 Fax:(315)455-2544	
ALL DIMENSIONS ARE IN INCHES			
TOLERANCES: FRACTIONS ±1/32 DECIMALS XXX=±.005 XX=±.01 X=±.1			
ANGLES ±.5° ALLOVER FINISH 25 Ra			
CONCENTRICITY .005 TOTAL INDICATOR RUN OUT			
PERPENDICULAR ±.002 (UNLESS OTHERWISE SPECIFIED)			
NAME: AL230-CP2800 CRYOREFRIGERATOR			
DWG #: AL230-CP2800 SYSTEM		SHT 1 OF 1	
MATERIAL: AS STATED			
DWN BY: BMR		DATE: 06JAN09	SCALE: TO FIT
1ST CHK: AO		DATE: 14JAN09	2ND CHK: BS
CUST:		DATE: 14JAN09	
BTA:			

ECN	ZONE	REV	DESCRIPTION	DATE
3072	-	A	ADDED AIR COOLED COMPRESSOR	15MAY13
1741	-	-	INITIAL RELEASE	06JAN09