

ALL INFORMATION CONTAINED IN THIS DOCUMENT SHOULD BE USED FOR REFERENCE PURPOSES ONLY & ARE SUBJECT TO CHANGE WITHOUT PRIOR NOTIFICATION. ALSO, THIS DOCUMENT IS CONSIDERED PROPRIETARY & THE SOLE PROPERTY OF CRYOMECH, INC. & SHOULD NOT BE REPRODUCED IN ANY MANNER WITHOUT PRIOR WRITTEN APPROVAL.

3/4" AEROQUIP

1.00 [25.4]

19.74 [501.4]

11.24 [285.5]

Ø6.50 [165.1]

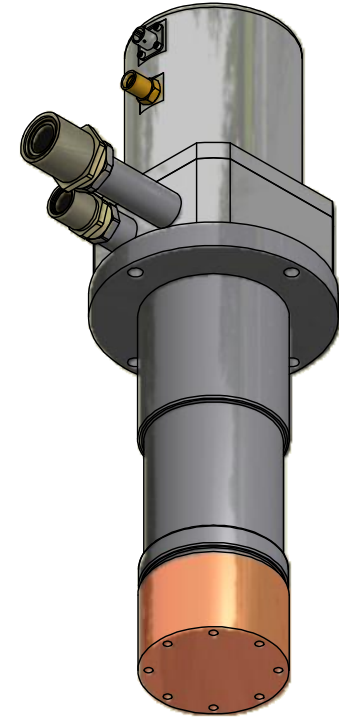
5.00 [127.0] □

.75 [19.1]

ROOM TEMPERATURE FLANGE

BARE COPPER HEAT EXCHANGER

Ø3.94 [100.0]

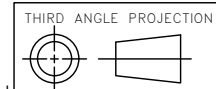


7.19 [182.6]  
 .81 [20.6]  
 1.62 [41.2]  
 8X M6x1 - 6H ▽.55  
 Ø3.38 [85.9]

4X Ø.41 [10.3] THRU  
 Ø5.75 [146.1]

1/2" AEROQUIP

4.80 [121.9]



**CRYOMECH, INC**

113 FALSO DRIVE SYRACUSE, N.Y. 13211  
 Tel: (315)455-2555 Fax:(315)455-2544

ALL DIMENSIONS ARE IN INCHES  
 TOLERANCES: FRACTIONS ±1/64 DECIMALS XXX=±.005 XX=±.01  
 ANGLES ±.5° ALLOVER FINISH 25 Ra  
 CONCENTRICITY .005 TOTAL INDICATOR RUN OUT  
 PERPENDICULAR ±.002 (UNLESS OTHERWISE SPECIFIED)

NAME: AL300 COLDHEAD OUTLINE			
DWG #: CH10300		SHT 1 OF 1	
MATERIAL: 103-10			
DWN BY: FCJ		DATE: 09JAN03	SCALE: .175
1ST CHK: KAH		DATE: -	2ND CHK: RED
DATE: -		DATE: -	
CUST:		BTA: BTA-CH10300	

ECN	ZONE	REV	DESCRIPTION	DATE
2511	-	C	REMOVED PLATING	10AUG10
1900	A2	B	CHANGED NICKEL PLATING SPEC.	06JUL09
1178	-	A	ADDED NOTE	31JUL06

THIS DRAWING SUPERSEDES CHAL300