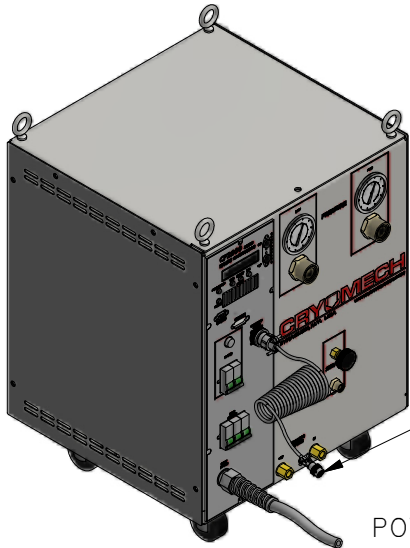


ALL INFORMATION CONTAINED IN THIS DOCUMENT SHOULD BE USED FOR REFERENCE PURPOSES ONLY & ARE SUBJECT TO CHANGE WITHOUT PRIOR NOTIFICATION. ALSO, THIS DOCUMENT IS CONSIDERED PROPRIETARY & THE SOLE PROPERTY OF CRYOMECH, INC. & SHOULD NOT BE REPRODUCED IN ANY MANNER WITHOUT PRIOR WRITTEN APPROVAL.



CP2870 COMPRESSOR PACKAGE (WATER COOLED)

POWER CORD

COLD HEAD MOTOR CORD (SAME LENGTH AS FLEX LINES)

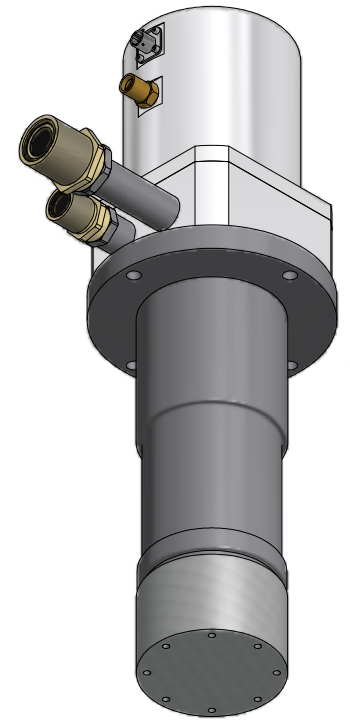
3/4" AEROQUIP

3/4" AEROQUIP

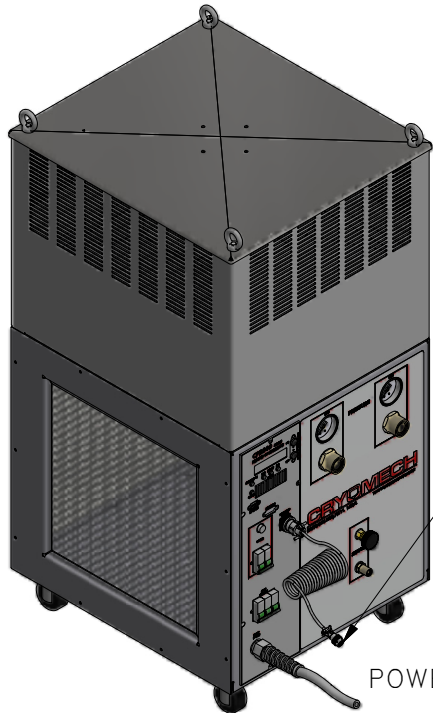
(2) HELIUM FLEX LINES (1) 1/2" ID (1) 3/4" ID
STANDARD LENGTH: 10ft
OTHER LENGTHS AVAILABLE

1/2" AEROQUIP

3/4" AEROQUIP



AL300 COLD HEAD

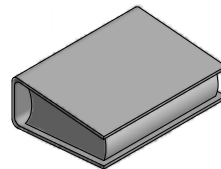


CP2870 COMPRESSOR PACKAGE (AIR COOLED)

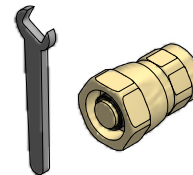
POWER CORD

COLD HEAD MOTOR CORD (SAME LENGTH AS FLEX LINES)

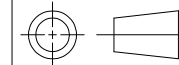
MANUAL



TOOL KIT



THIRD ANGLE PROJECTION



CRYOMECH, INC

113 FALSO DRIVE SYRACUSE, N.Y. 13211
Tel: (315)455-2555 Fax:(315)455-2544

ALL DIMENSIONS ARE IN INCHES
TOLERANCES: FRACTIONS ±1/32 DECIMALS .XXX=±.005 XX=±.01 X=±.1
ANGLES ±.5° ALLOVER FINISH 25 Ra
CONCENTRICITY .005 TOTAL INDICATOR RUN OUT
PERPENDICULAR ±.002 (UNLESS OTHERWISE SPECIFIED)

NAME: AL300-CP2800 CRYOREFRIGERATOR

DWG #: AL300-CP2800 SYSTEM SHT 1 OF 1

MATERIAL: AS STATED

DWN BY: BMR DATE: 06JAN08 SCALE: TO FIT DWG SIZE: A

1ST CHK: AO DATE: 14JAN09 2ND CHK: BS DATE: 14JAN09

CUST: BTA:

ECN	ZONE	REV	DESCRIPTION	DATE
3072	-	A	ADDED AIR COOLED COMPRESSOR	15MAY13
1741	-	-	INITIAL RELEASE	06JAN08