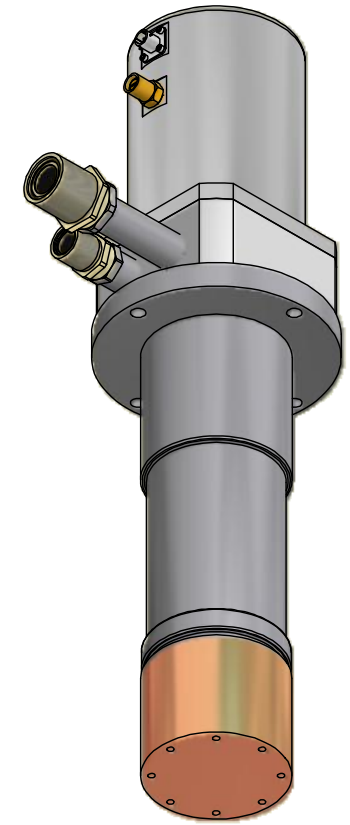
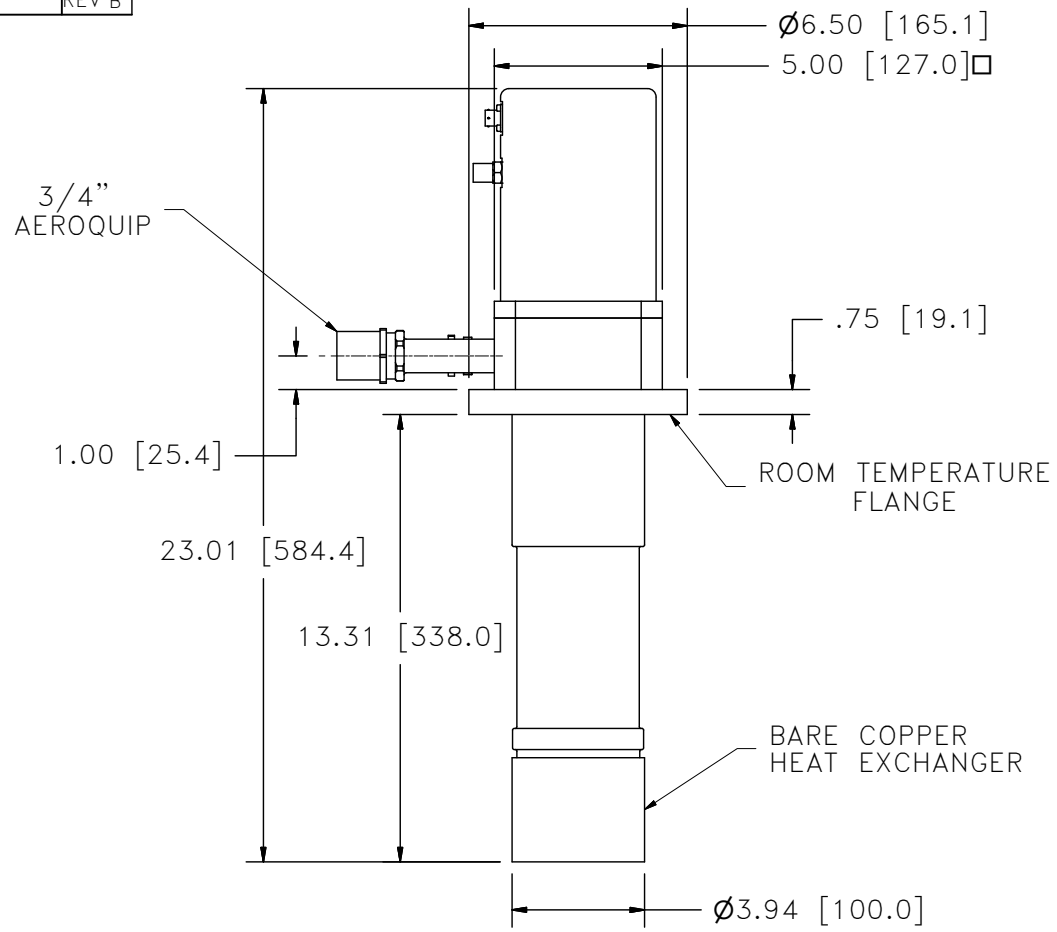


CH10325 REV B

ALL INFORMATION CONTAINED IN THIS DOCUMENT SHOULD BE USED FOR REFERENCE PURPOSES ONLY & ARE SUBJECT TO CHANGE WITHOUT PRIOR NOTIFICATION. ALSO, THIS DOCUMENT IS CONSIDERED PROPRIETARY & THE SOLE PROPERTY OF CRYOMECH, INC. & SHOULD NOT BE REPRODUCED IN ANY MANNER WITHOUT PRIOR WRITTEN APPROVAL.

B

A



B

A

THIRD ANGLE PROJECTION		<b>CRYOMECH, INC</b>	
		113 FALSO DRIVE SYRACUSE, N.Y. 13211 Tel: (315)455-2555 Fax:(315)455-2544	
ALL DIMENSIONS ARE IN INCHES			
TOLERANCES: FRACTIONS ±1/32 DECIMALS XXX=±.005 XX =±.01 X=±.1			
ANGLES ±.5° ALLOVER FINISH 25 Ra			
CONCENTRICITY .005 TOTAL INDICATOR RUN OUT			
PERPENDICULAR ±.002 (UNLESS OTHERWISE SPECIFIED)			
NAME: AL325 COLDHEAD OUTLINE			
DWG #: CH10325		SHT 1 OF 1	
MATERIAL: 103-73			
DWN BY: AO	DATE: 18MAY07	SCALE: .175	DWG SIZE: A
1ST CHK: AO	DATE: 30OCT07	2ND CHK: BZ	DATE: 30OCT07
CUST:		BTA: BTA-CH10330	

ECN	ZONE	REV	DESCRIPTION	DATE
2511	-	B	REMOVED PLATING	10AUG10
1900	A2	A	CHANGED NICKEL PLATING SPEC.	06JUL09
1393	-	-	INITIAL RELEASE	30OCT07

2

1