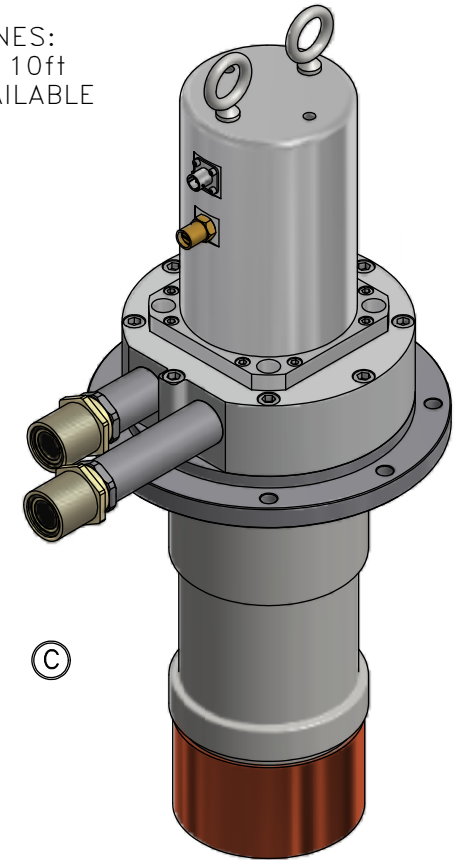
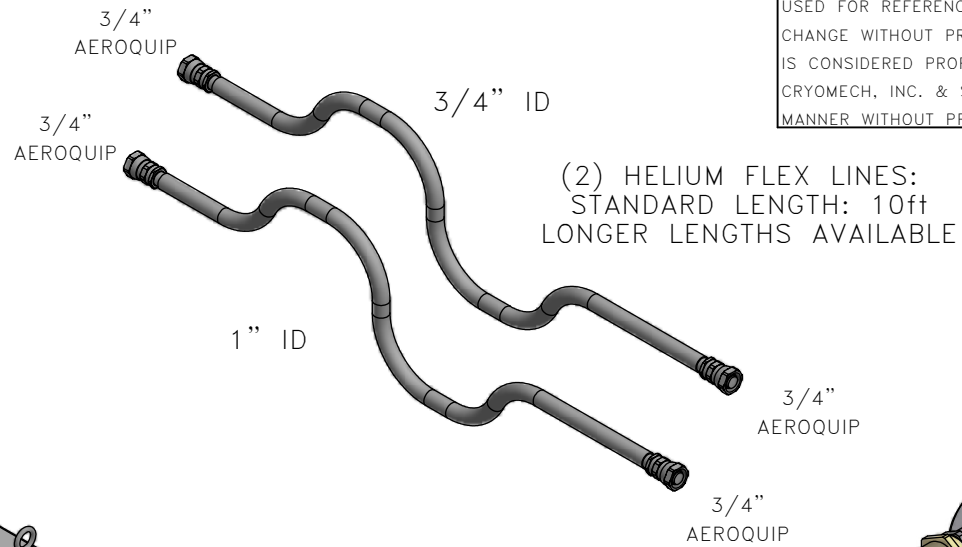
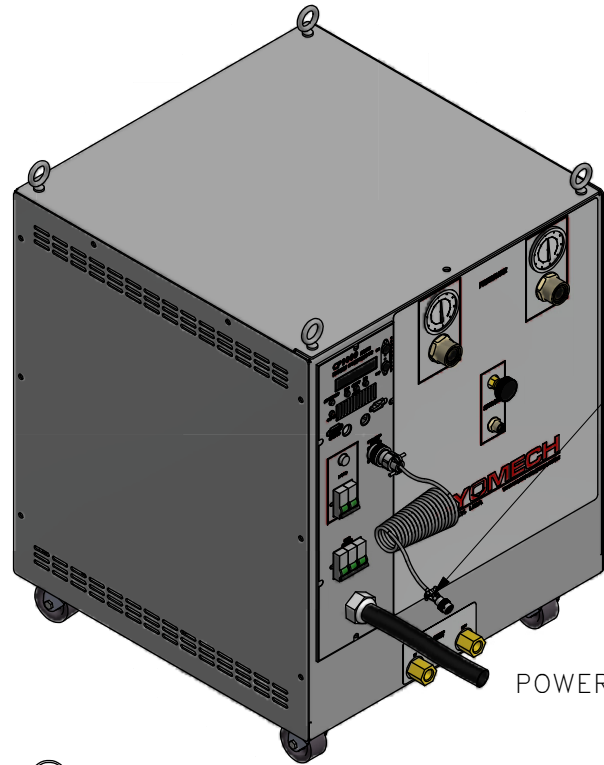


ALL INFORMATION CONTAINED IN THIS DOCUMENT SHOULD BE USED FOR REFERENCE PURPOSES ONLY & ARE SUBJECT TO CHANGE WITHOUT PRIOR NOTIFICATION. ALSO, THIS DOCUMENT IS CONSIDERED PROPRIETARY & THE SOLE PROPERTY OF CRYOMECH, INC. & SHOULD NOT BE REPRODUCED IN ANY MANNER WITHOUT PRIOR WRITTEN APPROVAL.



AL600 COLD HEAD

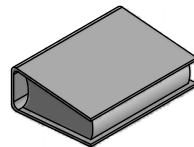


POWER CORD

COLD HEAD MOTOR CORD (SAME LENGTH AS FLEX LINES)

CP1114 COMPRESSOR PACKAGE (WATER COOLED)

MANUAL



TOOL KIT



THIRD ANGLE PROJECTION		CRYOMECH, INC	
		113 FALSO DRIVE SYRACUSE, N.Y. 13211 Tel: (315)455-2555 Fax:(315)455-2544	
ALL DIMENSIONS ARE IN INCHES			
TOLERANCES: FRACTIONS $\pm 1/32$ DECIMALS $XXX = \pm 0.005$ $XX = \pm 0.01$ $X = \pm 0.1$			
ANGLES $\pm 5^\circ$ ALLOVER FINISH 25 Ra			
CONCENTRICITY .005 TOTAL INDICATOR RUN OUT			
PERPENDICULAR ± 0.002 (UNLESS OTHERWISE SPECIFIED)			
NAME: AL600 CRYOREFRIGERATOR			
DWG #: AL600 SYSTEM		SHT 1 OF 1	
MATERIAL: AS STATED			
DWN BY: BMR		DATE: 19OCT06	SCALE: TO FIT
DWG SIZE: A	1ST CHK: AO	DATE: 20OCT06	2ND CHK: BZ
DATE: 25OCT06	CUST:	BTA:	

ECN	ZONE	REV	DESCRIPTION	DATE
2949	B1	C	AL600 COLDHEAD REDESIGNED	29OCT12
2927	A2	B	CP1114 COMPRESSOR WAS CP1014	27SEP12