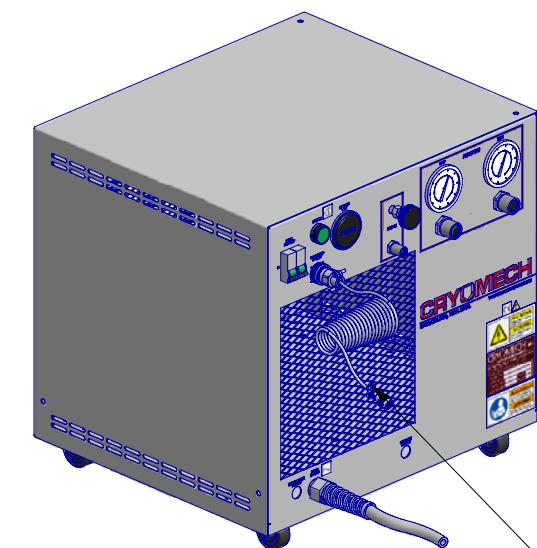


ALL INFORMATION CONTAINED IN THIS DOCUMENT SHOULD BE USED FOR REFERENCE PURPOSES ONLY & ARE SUBJECT TO CHANGE WITHOUT PRIOR NOTIFICATION. ALSO, THIS DOCUMENT IS CONSIDERED PROPRIETARY & THE SOLE PROPERTY OF CRYOMECH, INC. & SHOULD NOT BE REPRODUCED IN ANY MANNER WITHOUT PRIOR WRITTEN APPROVAL.

B

B



POWER CORD

CP820 COMPRESSOR PACKAGE
(AIR COOLED)

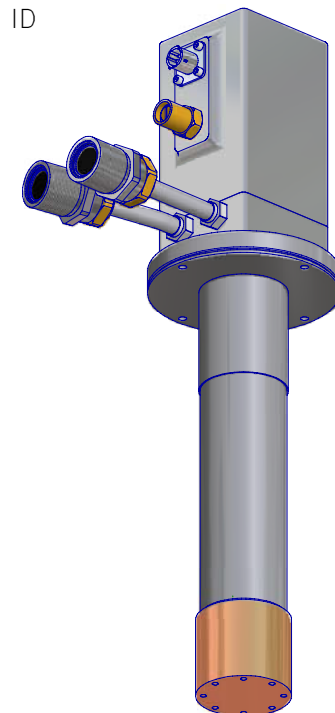
1/2" AEROQUIP

1/2" AEROQUIP

(2) HELIUM FLEX LINES 1/2" ID
STANDARD LENGTH: 10ft
OTHER LENGTHS AVAILABLE

1/2" AEROQUIP

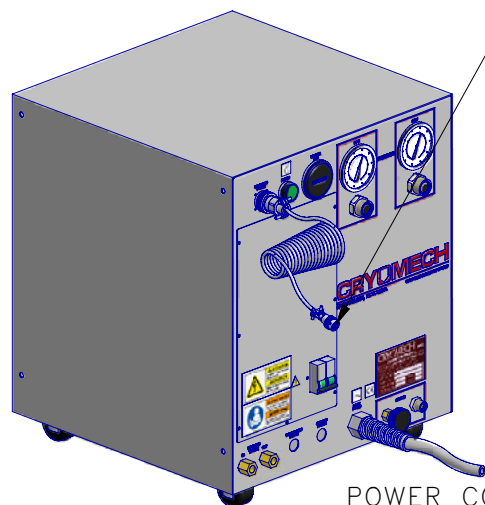
1/2" AEROQUIP

COLD HEAD
MOTOR CORD
(SAME LENGTH
AS FLEX LINES)

AL60 COLD HEAD

A

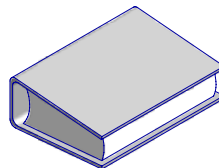
A



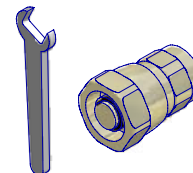
POWER CORD

CP820 COMPRESSOR PACKAGE
(WATER COOLED)

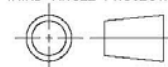
MANUAL



TOOL KIT



THIRD ANGLE PROJECTION

**CRYOMECH, INC.**113 FALSO DRIVE SYRACUSE N.Y. 13211
Tel: (315)455-2555 Fax: (315)455-2544

ALL DIMENSIONS ARE IN INCHES
TOLERANCES: FRACTIONS $\pm 1/64$ DECIMALS $XXX = \pm .005$ $XX = \pm .01$ $X = \pm .1$
ANGLES $\pm .5^\circ$ ALLOVER FINISH 25 R_a
CONCENTRICITY .005 TOTAL INDICATOR RUN OUT
PERPENDICULARITY $\pm .002$ (UNLESS OTHERWISE SPECIFIED)

NAME: AL60 CRYOREFRIGERATOR

PART #: S04-1060821

SHT 1 OF 1

MATERIAL: AS STATED

DWN BY: BL DATE: 19JUL04

SCALE: TO FIT

DWG SIZE: A

1ST CHK: RED DATE: 03AUG04

2ND CHK: JPC DATE: 03AUG04

CUST: -

599	-	A	CHANGED FROM 2-D TO 3-D	28JUN04
ECN	ZONE	REV	DESCRIPTION	DATE

2

1