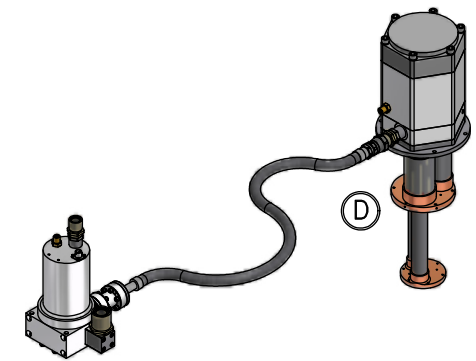
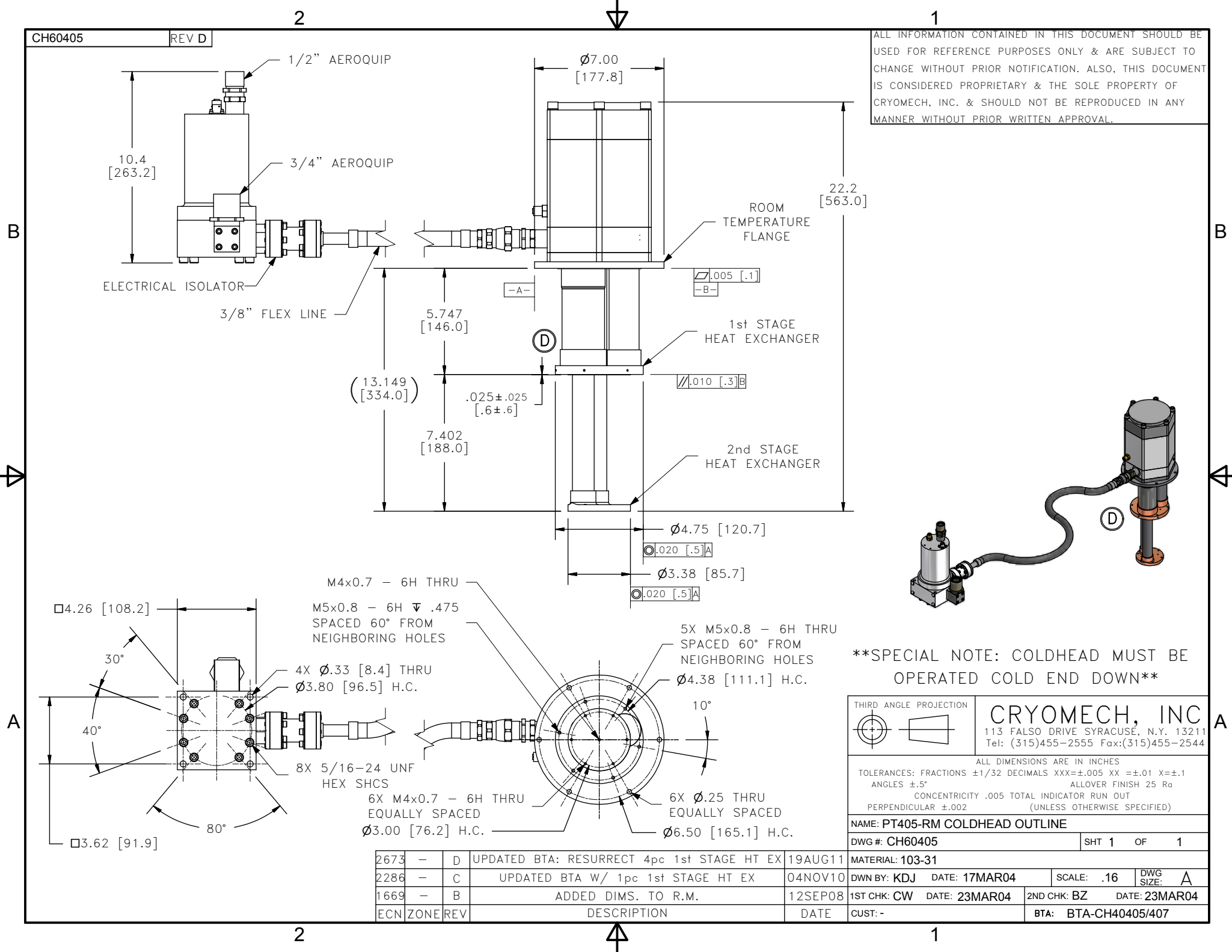


ALL INFORMATION CONTAINED IN THIS DOCUMENT SHOULD BE USED FOR REFERENCE PURPOSES ONLY & ARE SUBJECT TO CHANGE WITHOUT PRIOR NOTIFICATION. ALSO, THIS DOCUMENT IS CONSIDERED PROPRIETARY & THE SOLE PROPERTY OF CRYOMECH, INC. & SHOULD NOT BE REPRODUCED IN ANY MANNER WITHOUT PRIOR WRITTEN APPROVAL.



****SPECIAL NOTE: COLDHEAD MUST BE OPERATED COLD END DOWN****

THIRD ANGLE PROJECTION		CRYOMECH, INC	
		113 FALSO DRIVE SYRACUSE, N.Y. 13211 Tel: (315)455-2555 Fax:(315)455-2544	
ALL DIMENSIONS ARE IN INCHES			
TOLERANCES: FRACTIONS ±1/32 DECIMALS XXX=±.005 XX =±.01 X=±.1			
ANGLES ±.5° ALLOVER FINISH 25 Ra			
CONCENTRICITY .005 TOTAL INDICATOR RUN OUT			
PERPENDICULAR ±.002 (UNLESS OTHERWISE SPECIFIED)			
NAME: PT405-RM COLDHEAD OUTLINE			
DWG #: CH60405		SHT 1 OF 1	
MATERIAL: 103-31			
DWN BY: KDJ	DATE: 17MAR04	SCALE: .16	DWG SIZE: A
1ST CHK: CW	DATE: 23MAR04	2ND CHK: BZ	DATE: 23MAR04
CUST: -		BTA: BTA-CH40405/407	

ECN	ZONE	REV	DESCRIPTION	DATE
2673	-	D	UPDATED BTA: RESURRECT 4pc 1st STAGE HT EX	19AUG11
2286	-	C	UPDATED BTA W/ 1pc 1st STAGE HT EX	04NOV10
1669	-	B	ADDED DIMS. TO R.M.	12SEP08