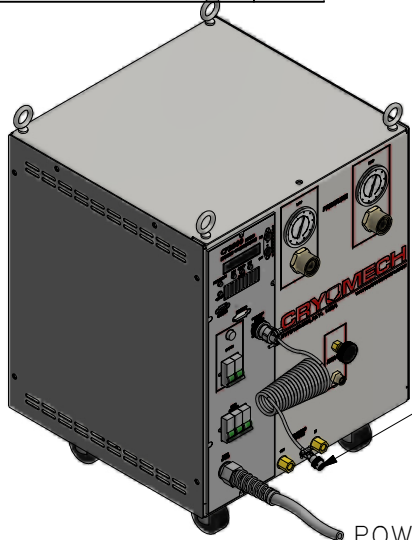


ALL INFORMATION CONTAINED IN THIS DOCUMENT SHOULD BE USED FOR REFERENCE PURPOSES ONLY & ARE SUBJECT TO CHANGE WITHOUT PRIOR NOTIFICATION. ALSO, THIS DOCUMENT IS CONSIDERED PROPRIETARY & THE SOLE PROPERTY OF CRYOMECH, INC. & SHOULD NOT BE REPRODUCED IN ANY MANNER WITHOUT PRIOR WRITTEN APPROVAL.



CP2850 COMPRESSOR PACKAGE (WATER COOLED)

COLD HEAD MOTOR CORD (SAME LENGTH AS FLEX LINES)

POWER CORD

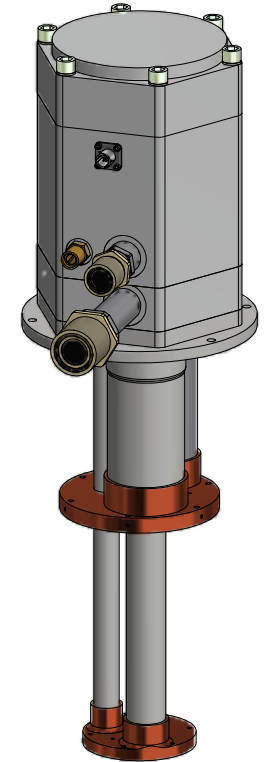
3/4" AEROQUIP

3/4" AEROQUIP

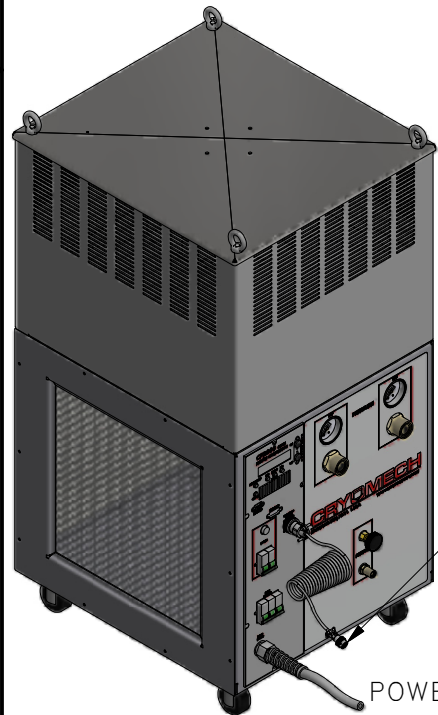
(2) HELIUM FLEX LINES 3/4" ID
STANDARD LENGTH: 10ft
LONGER LENGTHS AVAILABLE

1/2" AEROQUIP

3/4" AEROQUIP



PT405 COLD HEAD

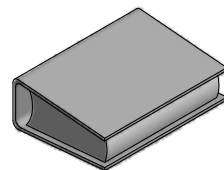


CP2850 COMPRESSOR PACKAGE (AIR COOLED)

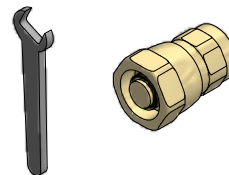
COLD HEAD MOTOR CORD (SAME LENGTH AS FLEX LINES)

POWER CORD

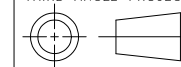
MANUAL



TOOL KIT



THIRD ANGLE PROJECTION



CRYOMECH, INC

113 FALSO DRIVE SYRACUSE, N.Y. 13211
Tel: (315)455-2555 Fax:(315)455-2544

ALL DIMENSIONS ARE IN INCHES
TOLERANCES: FRACTIONS ±1/32 DECIMALS .XXX=±.005 XX=±.01 X=±.1
ANGLES ±.5° ALLOVER FINISH 25 Ra
CONCENTRICITY .005 TOTAL INDICATOR RUN OUT
PERPENDICULAR ±.002 (UNLESS OTHERWISE SPECIFIED)

NAME: PT405 CP2800 CRYOREFRIGERATOR

DWG #: PT405 CP2800 SYSTEM

SHT 1 OF 1

MATERIAL: AS STATED

DWN BY: BMR DATE: 14AUG07

SCALE: TO FIT

DWG SIZE: A

1ST CHK: RED DATE: 21AUG07

2ND CHK: AO DATE: 21AUG07

CUST:

BTA:

ECN	ZONE	REV	DESCRIPTION	DATE
3072	-	A	ADDED AIR COOLED COMPRESSOR	21MAY13
1436	-	-	INITIAL RELEASE	14AUG07