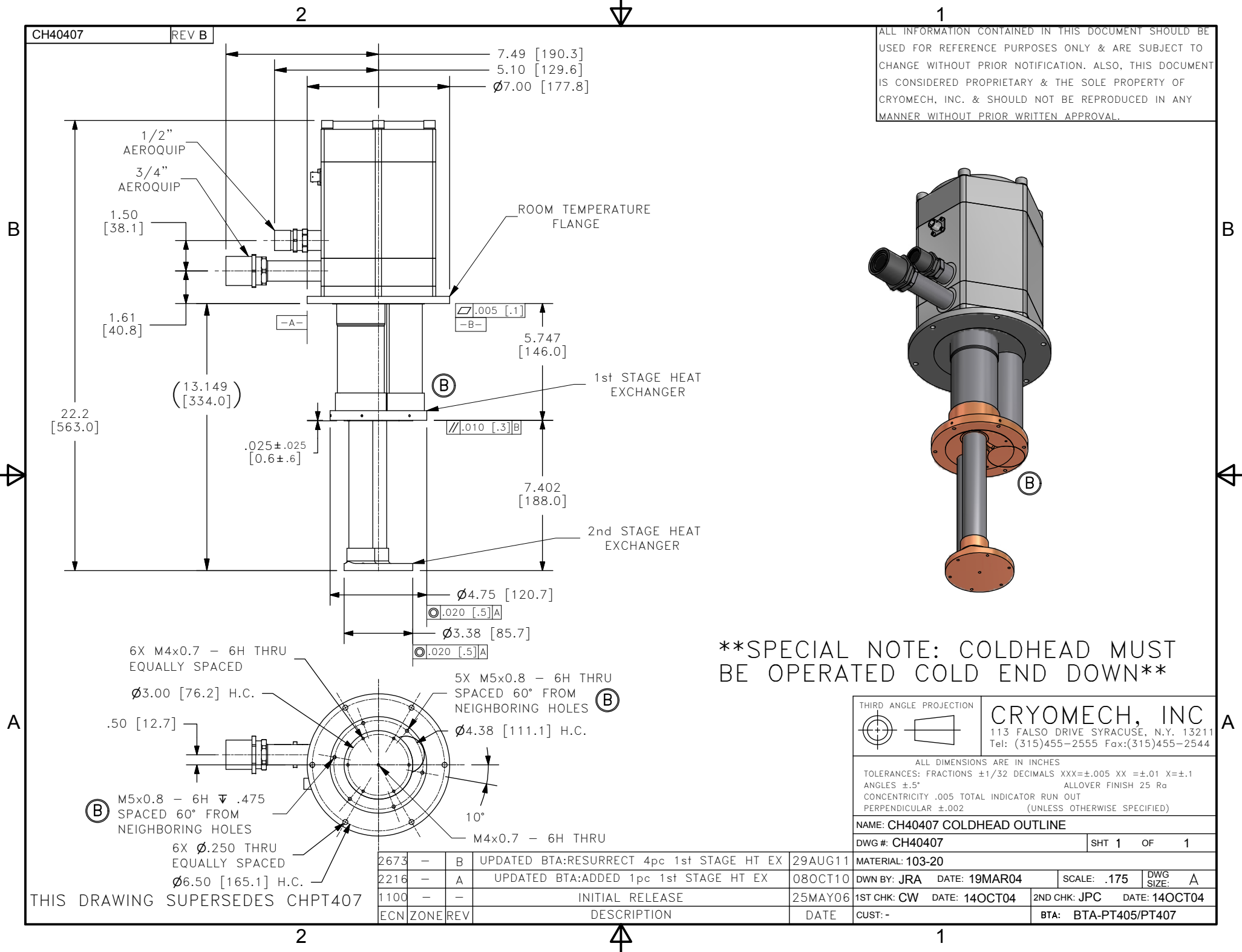
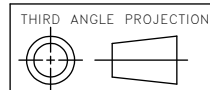


CH40407 REV B

ALL INFORMATION CONTAINED IN THIS DOCUMENT SHOULD BE USED FOR REFERENCE PURPOSES ONLY & ARE SUBJECT TO CHANGE WITHOUT PRIOR NOTIFICATION. ALSO, THIS DOCUMENT IS CONSIDERED PROPRIETARY & THE SOLE PROPERTY OF CRYOMECH, INC. & SHOULD NOT BE REPRODUCED IN ANY MANNER WITHOUT PRIOR WRITTEN APPROVAL.



**\*\*SPECIAL NOTE: COLDHEAD MUST BE OPERATED COLD END DOWN\*\***



**CRYOMECH, INC**  
113 FALSO DRIVE SYRACUSE, N.Y. 13211  
Tel: (315)455-2555 Fax:(315)455-2544

ALL DIMENSIONS ARE IN INCHES  
TOLERANCES: FRACTIONS  $\pm 1/32$  DECIMALS  $XXX = \pm .005$   $XX = \pm .01$   $X = \pm .1$   
ANGLES  $\pm .5^\circ$  ALLOVER FINISH 25 Ra  
CONCENTRICITY .005 TOTAL INDICATOR RUN OUT  
PERPENDICULAR  $\pm .002$  (UNLESS OTHERWISE SPECIFIED)

NAME: CH40407 COLDHEAD OUTLINE

DWG #: CH40407

SHT 1 OF 1

MATERIAL: 103-20

DWN BY: JRA DATE: 19MAR04

SCALE: .175 DWG SIZE: A

1ST CHK: CW DATE: 14OCT04

2ND CHK: JPC DATE: 14OCT04

CUST: -

BTA: BTA-PT405/PT407

THIS DRAWING SUPERSEDES CHPT407