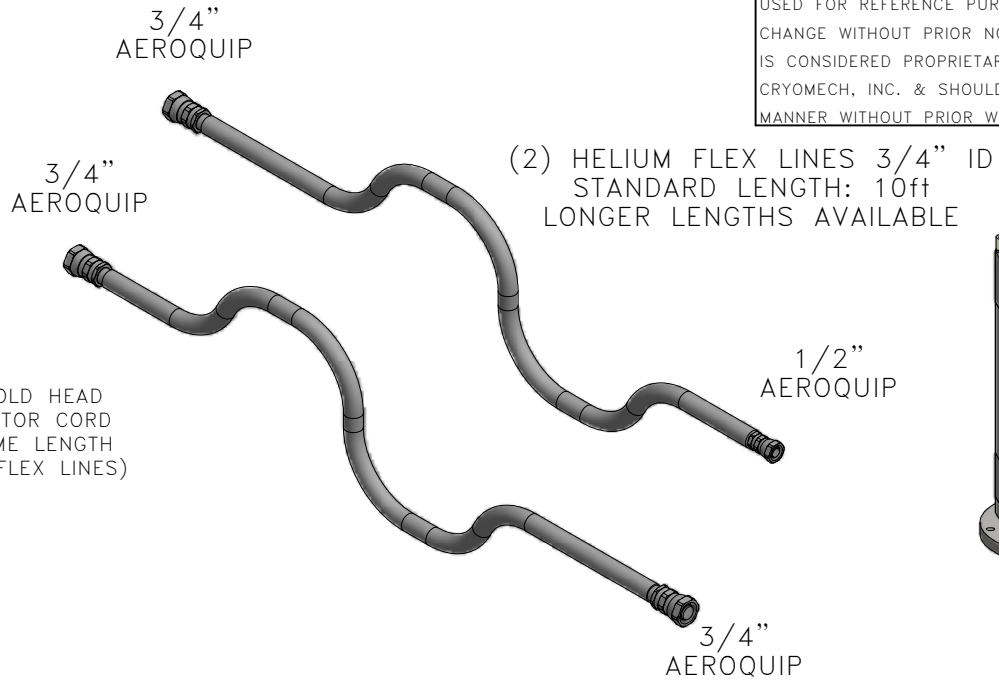
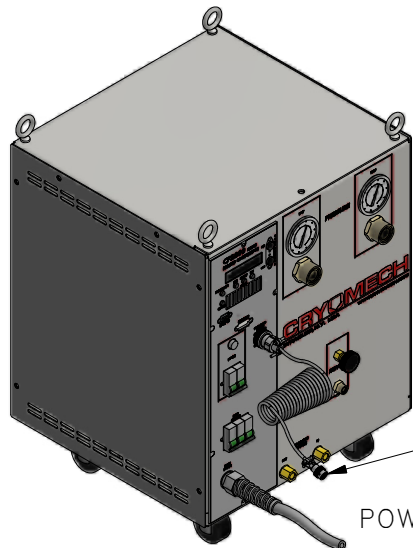
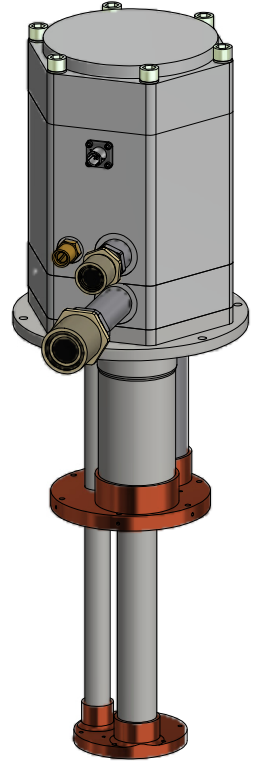


ALL INFORMATION CONTAINED IN THIS DOCUMENT SHOULD BE USED FOR REFERENCE PURPOSES ONLY & ARE SUBJECT TO CHANGE WITHOUT PRIOR NOTIFICATION. ALSO, THIS DOCUMENT IS CONSIDERED PROPRIETARY & THE SOLE PROPERTY OF CRYOMECH, INC. & SHOULD NOT BE REPRODUCED IN ANY MANNER WITHOUT PRIOR WRITTEN APPROVAL.



COLD HEAD MOTOR CORD (SAME LENGTH AS FLEX LINES)

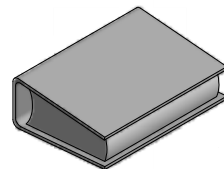
POWER CORD



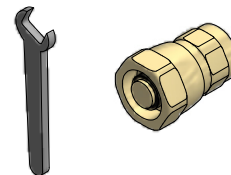
COLD HEAD MOTOR CORD (SAME LENGTH AS FLEX LINES)

POWER CORD

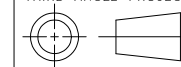
MANUAL



TOOL KIT



THIRD ANGLE PROJECTION



CRYOMECH, INC

113 FALSO DRIVE SYRACUSE, N.Y. 13211
 Tel: (315)455-2555 Fax:(315)455-2544

ALL DIMENSIONS ARE IN INCHES
 TOLERANCES: FRACTIONS ±1/32 DECIMALS XXX=±.005 XX=±.01 X=±.1
 ANGLES ±.5° ALLOVER FINISH 25 Ra
 CONCENTRICITY .005 TOTAL INDICATOR RUN OUT
 PERPENDICULAR ±.002 (UNLESS OTHERWISE SPECIFIED)

NAME: PT407 CP2800 CRYOREFRIGERATOR

DWG #: PT407 CP2800 SYSTEM SHT 1 OF 1

MATERIAL: AS STATED

DWN BY: BMR DATE: 08AUG07 SCALE: TO FIT DWG SIZE: A

1ST CHK: AO DATE: 08AUG07 2ND CHK: RED DATE: 08AUG07

CUST: BTA:

ECN	ZONE	REV	DESCRIPTION	DATE
3072	A2	A	ADDED AIR COOLED COMPRESSOR	08MAY13
1432	-	-	INITIAL RELEASE	08AUG07

CP2870 COMPRESSOR PACKAGE (AIR COOLED)