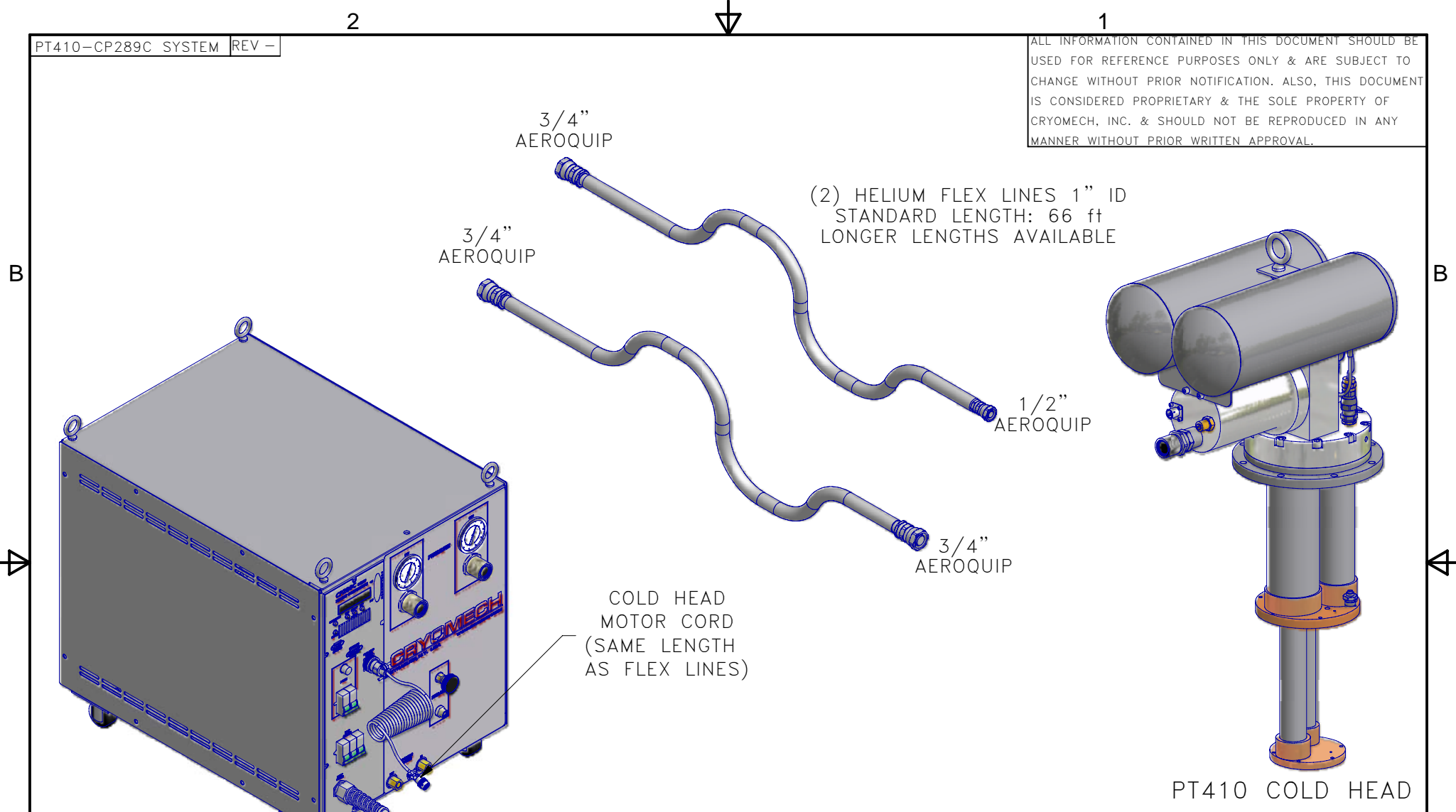


ALL INFORMATION CONTAINED IN THIS DOCUMENT SHOULD BE USED FOR REFERENCE PURPOSES ONLY & ARE SUBJECT TO CHANGE WITHOUT PRIOR NOTIFICATION. ALSO, THIS DOCUMENT IS CONSIDERED PROPRIETARY & THE SOLE PROPERTY OF CRYOMECH, INC. & SHOULD NOT BE REPRODUCED IN ANY MANNER WITHOUT PRIOR WRITTEN APPROVAL.



CP289C COMPRESSOR PACKAGE (WATER COOLED)

POWER CORD

COLD HEAD MOTOR CORD (SAME LENGTH AS FLEX LINES)

MANUAL

TOOL KIT

PT410 COLD HEAD

THIRD ANGLE PROJECTION		CRYOMECH, INC	
		113 FALSO DRIVE SYRACUSE, N.Y. 13211 Tel: (315)455-2555 Fax:(315)455-2544	
ALL DIMENSIONS ARE IN INCHES			
TOLERANCES: FRACTIONS ±1/32 DECIMALS .XXX=±.005 XX =±.01 X=±.1			
ANGLES ±.5° ALLOVER FINISH 25 Ra			
CONCENTRICITY .005 TOTAL INDICATOR RUN OUT			
PERPENDICULAR ±.002 (UNLESS OTHERWISE SPECIFIED)			
NAME: PT410-CP289C CRYOREFRIGERATOR			
DWG #: PT410-CP289C SYSTEM		SHT 1 OF 1	
MATERIAL: AS STATED			
DWN BY: BMR		DATE: 14AUG09	SCALE: TO FIT
1ST CHK: AO		DATE: 14AUG09	2ND CHK: CW
CUST:		DATE: 14AUG09	DATE: 14AUG09
		BTA:	DWG SIZE: A

1948	-	-	INITIAL RELEASE	14AUG09
ECN	ZONE	REV	DESCRIPTION	DATE