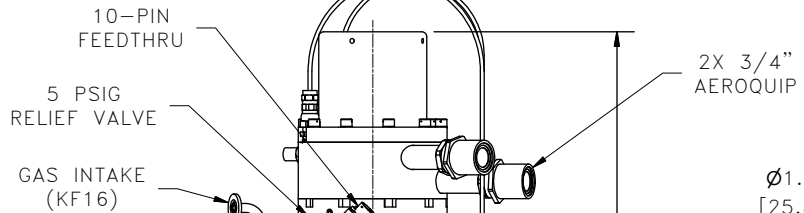
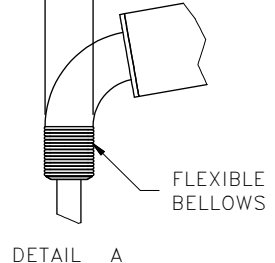


ALL INFORMATION CONTAINED IN THIS DOCUMENT SHOULD BE USED FOR REFERENCE PURPOSES ONLY & ARE SUBJECT TO CHANGE WITHOUT PRIOR NOTIFICATION. ALSO, THIS DOCUMENT IS CONSIDERED PROPRIETARY & THE SOLE PROPERTY OF CRYOMECH, INC. & SHOULD NOT BE REPRODUCED IN ANY MANNER WITHOUT PRIOR WRITTEN APPROVAL.



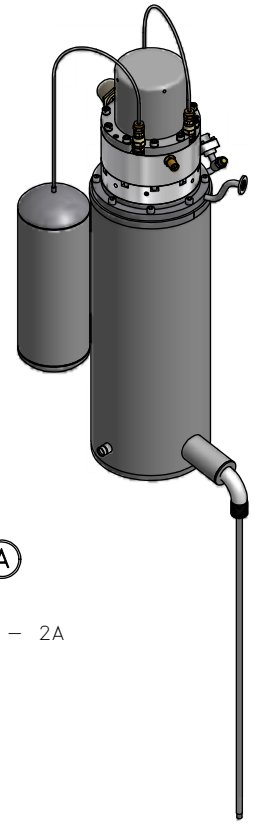
29.0 [736.6]

Ø1.0 [25.4]

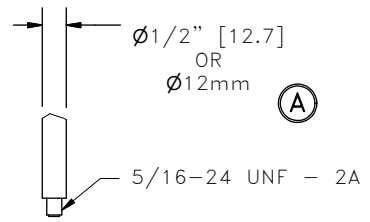


FLEXIBLE BELLOWS

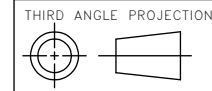
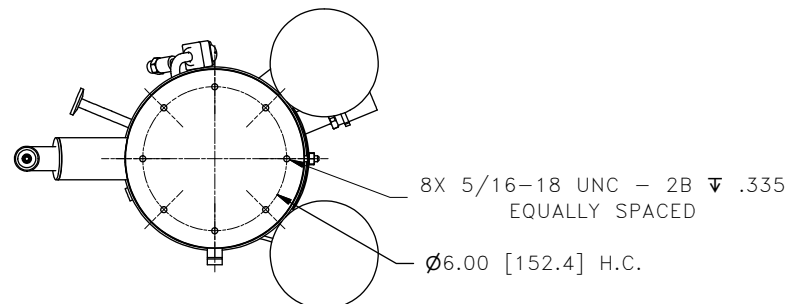
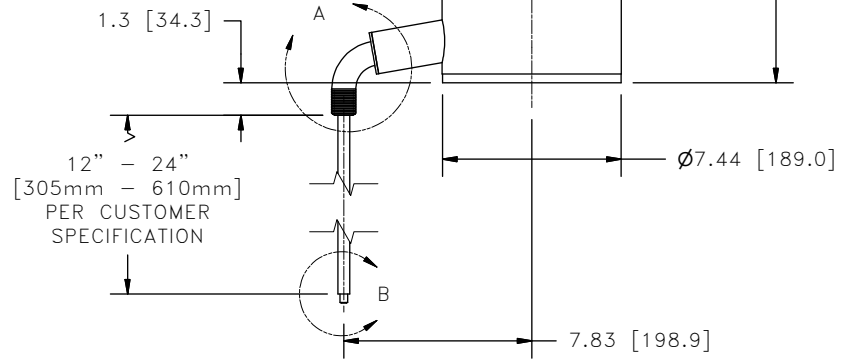
DETAIL A



DRAIN LEG AVAILABLE IN:



DETAIL B



**CRYOMECH, INC**  
 113 FALSO DRIVE SYRACUSE, N.Y. 13211  
 Tel: (315)455-2555 Fax:(315)455-2544

ALL DIMENSIONS ARE IN INCHES  
 TOLERANCES: FRACTIONS ±1/32 DECIMALS XXX=±.005 XX =±.01 X=±.1  
 ANGLES ±.5° ALLOVER FINISH 25 Ra  
 CONCENTRICITY .005 TOTAL INDICATOR RUN OUT  
 PERPENDICULAR ±.002 (UNLESS OTHERWISE SPECIFIED)

NAME: PT415 HELIUM RELIQUEFIER  
 DWG #: HeRL15 SHT 1 OF 1  
 MATERIAL: 107-06

2719	-	A	ADDED 12mm OPTION, MATERIAL WAS 107-03	20DEC11	DWN BY: WAG DATE: 11FEB09	SCALE: 1:8	DWG SIZE: A
1768	-	-	INITIAL RELEASE	11FEB09	1ST CHK: AO DATE: 2/11/09	2ND CHK: CW	DATE: 2-11-09
ECN	ZONE	REV	DESCRIPTION	DATE	CUST: -	CH: 103-195	BTA: BTA-CH40415Y09