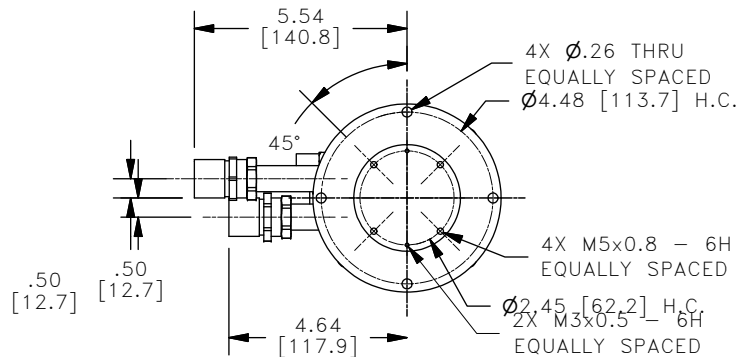
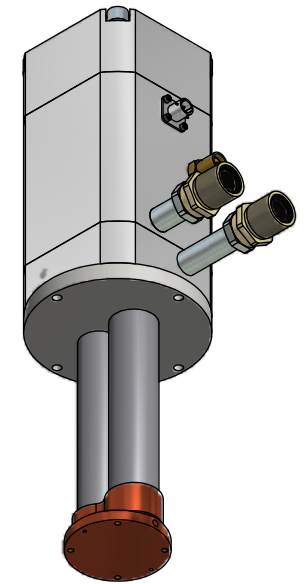
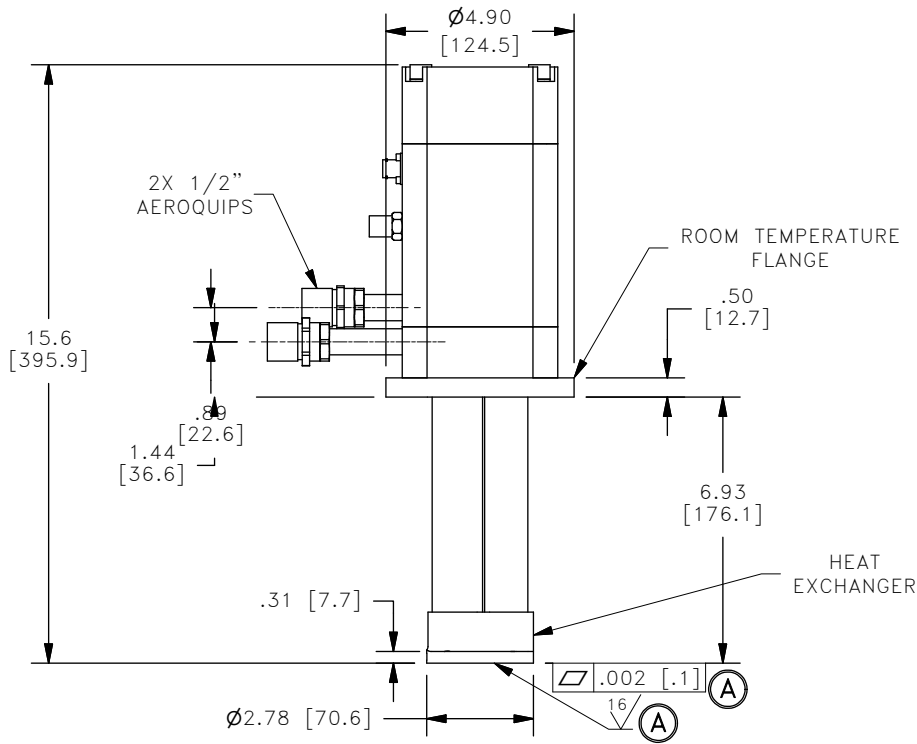
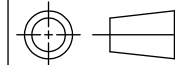


ALL INFORMATION CONTAINED IN THIS DOCUMENT SHOULD BE USED FOR REFERENCE PURPOSES ONLY & ARE SUBJECT TO CHANGE WITHOUT PRIOR NOTIFICATION. ALSO, THIS DOCUMENT IS CONSIDERED PROPRIETARY & THE SOLE PROPERTY OF CRYOMECH, INC. & SHOULD NOT BE REPRODUCED IN ANY MANNER WITHOUT PRIOR WRITTEN APPROVAL.



**\*\*SPECIAL NOTE: COLDHEAD MUST BE OPERATED COLD END DOWN\*\***

THIRD ANGLE PROJECTION



**CRYOMECH, INC**

113 FALSO DRIVE SYRACUSE, N.Y. 13211  
Tel: (315)455-2555 Fax:(315)455-2544

ALL DIMENSIONS ARE IN INCHES  
TOLERANCES: FRACTIONS  $\pm 1/32$  DECIMALS  $XXX = \pm .005$   $XX = \pm .01$   $X = \pm .1$   
ANGLES  $\pm .5^\circ$  ALLOVER FINISH 25 Ra  
CONCENTRICITY  $.005$  TOTAL INDICATOR RUN OUT  
PERPENDICULAR  $\pm .002$  (UNLESS OTHERWISE SPECIFIED)

NAME: PT63 COLDHEAD OUTLINE

DWG #: CH3C063

SHT 1 OF 1

MATERIAL: 103-53

2718	-	A	ADD SURFACE FINISH & FLATNESS NOTES	21AUG11	DWN BY: AO	DATE: 05JUL07	SCALE: 1:4	DWG SIZE: A
1419	-	-	INITIAL RELEASE	05JUL07	1ST CHK: CW	DATE: 05JUL07	2ND CHK: BZ	DATE: 05JUL07
ECN	ZONE	REV	DESCRIPTION	DATE	CUST: -		BTA: BTA-CH30060_63	