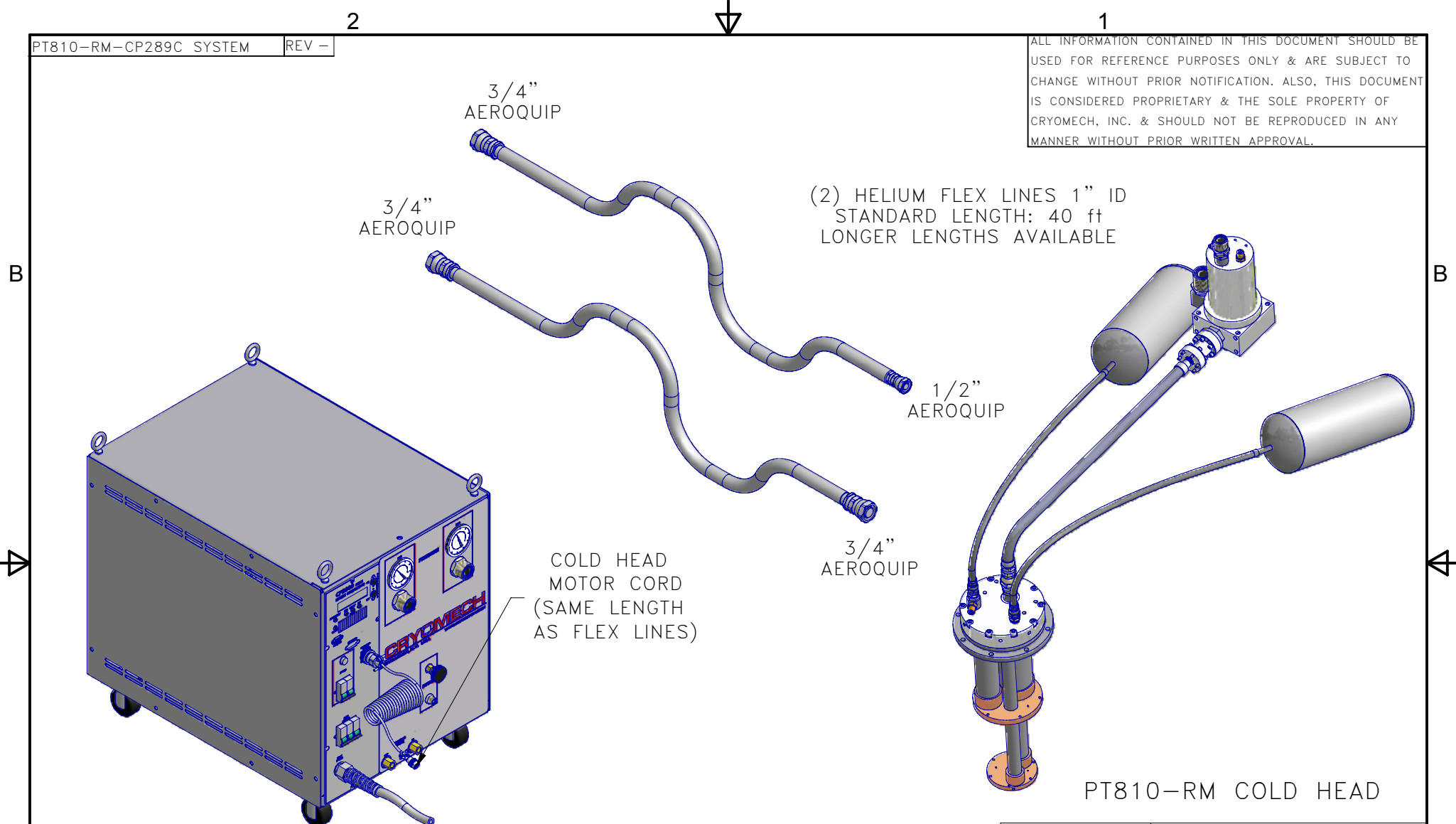
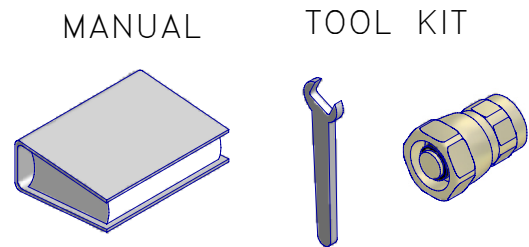


ALL INFORMATION CONTAINED IN THIS DOCUMENT SHOULD BE USED FOR REFERENCE PURPOSES ONLY & ARE SUBJECT TO CHANGE WITHOUT PRIOR NOTIFICATION. ALSO, THIS DOCUMENT IS CONSIDERED PROPRIETARY & THE SOLE PROPERTY OF CRYOMECH, INC. & SHOULD NOT BE REPRODUCED IN ANY MANNER WITHOUT PRIOR WRITTEN APPROVAL.



CP289C COMPRESSOR PACKAGE (WATER COOLED)

PT810-RM COLD HEAD



THIRD ANGLE PROJECTION			
<p><b>CRYOMECH, INC</b>                  113 FALSO DRIVE SYRACUSE, N.Y. 13211                  Tel: (315)455-2555 Fax:(315)455-2544</p>		<p>ALL DIMENSIONS ARE IN INCHES                  TOLERANCES: FRACTIONS ±1/32 DECIMALS XXX=±.005 XX =±.01 X=±.1                  ANGLES ±.5° ALLOVER FINISH 25 Ra                  CONCENTRICITY .005 TOTAL INDICATOR RUN OUT                  PERPENDICULAR ±.002 (UNLESS OTHERWISE SPECIFIED)</p>	
NAME: PT810-RM-CP289C CRYOREFRIGERATOR			
DWG #: PT810-RM-CP289C SYSTEM		SHT 1 OF 1	
MATERIAL: AS STATED			
DWN BY: BMR DATE: 29OCT09		SCALE: TO FIT	DWG SIZE: <b>A</b>
2009 - -	INITIAL RELEASE.	29OCT09	1ST CHK: AO DATE: 03NOV09
ECN ZONE REV	DESCRIPTION	DATE	2ND CHK: BZ DATE: 03NOV09
CUST:		BTA:	

2009 - -	INITIAL RELEASE.	29OCT09	1ST CHK: AO DATE: 03NOV09
ECN ZONE REV	DESCRIPTION	DATE	2ND CHK: BZ DATE: 03NOV09
CUST:		BTA:	