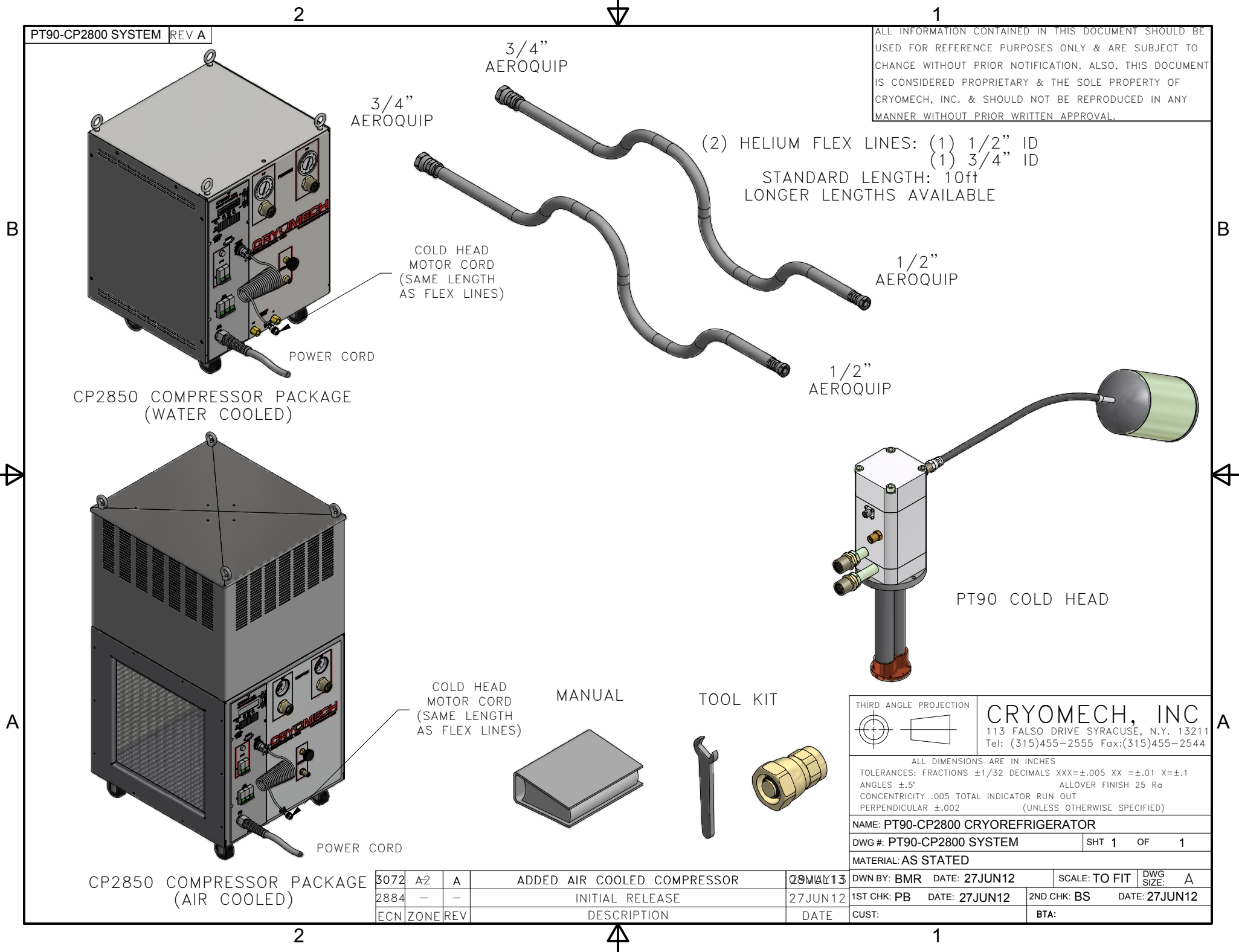


ALL INFORMATION CONTAINED IN THIS DOCUMENT SHOULD BE USED FOR REFERENCE PURPOSES ONLY & ARE SUBJECT TO CHANGE WITHOUT PRIOR NOTIFICATION. ALSO, THIS DOCUMENT IS CONSIDERED PROPRIETARY & THE SOLE PROPERTY OF CRYOMECH, INC. & SHOULD NOT BE REPRODUCED IN ANY MANNER WITHOUT PRIOR WRITTEN APPROVAL.



THIRD ANGLE PROJECTION

CRYOMECH, INC
113 FALSO DRIVE SYRACUSE, N.Y. 13211
Tel: (315)455-2555 Fax:(315)455-2544

ALL DIMENSIONS ARE IN INCHES
TOLERANCES: FRACTIONS $\pm 1/32$ DECIMALS $XXX = \pm .005$ $XX = \pm .01$ $X = \pm .1$
ANGLES $\pm .5^\circ$ ALLOVER FINISH 25 Ra
CONCENTRICITY .005 TOTAL INDICATOR RUN OUT
PERPENDICULAR $\pm .002$ (UNLESS OTHERWISE SPECIFIED)

NAME: PT90-CP2800 CRYOREFRIGERATOR

DWG #: PT90-CP2800 SYSTEM

SHT 1 OF 1

MATERIAL: AS STATED

DWN BY: BMR DATE: 27JUN12

SCALE: TO FIT DWG SIZE: A

1ST CHK: PB DATE: 27JUN12

2ND CHK: BS DATE: 27JUN12

CUST:

BTA:

ECN	ZONE	REV	DESCRIPTION	DATE
3072	A2	A	ADDED AIR COOLED COMPRESSOR	28JUN13
2884	-	-	INITIAL RELEASE	27JUN12