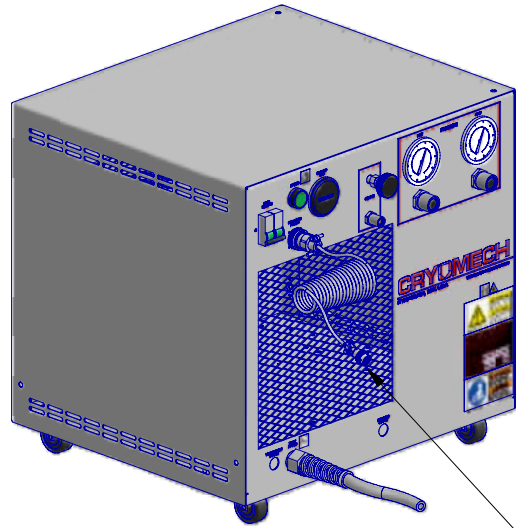


ALL INFORMATION CONTAINED IN THIS DOCUMENT SHOULD BE USED FOR REFERENCE PURPOSES ONLY & ARE SUBJECT TO CHANGE WITHOUT PRIOR NOTIFICATION. ALSO, THIS DOCUMENT IS CONSIDERED PROPRIETARY & THE SOLE PROPERTY OF CRYOMECH, INC. & SHOULD NOT BE REPRODUCED IN ANY MANNER WITHOUT PRIOR WRITTEN APPROVAL.

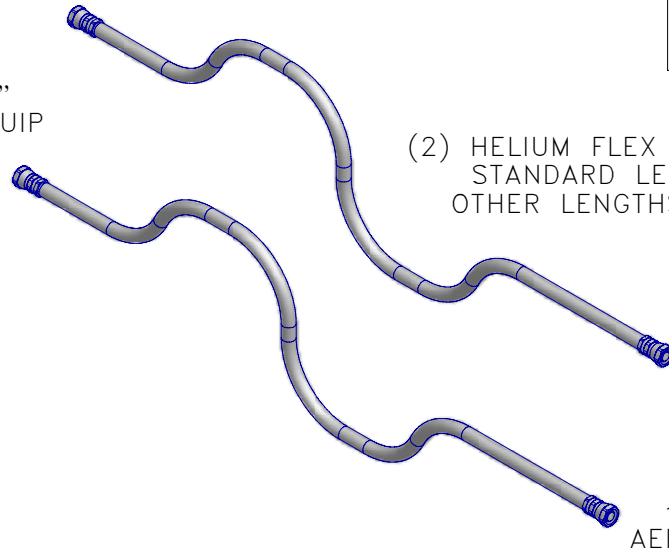
B



POWER CORD
CP810 COMPRESSOR PACKAGE
(AIR COOLED)

1/2" AEROQUIP

1/2" AEROQUIP

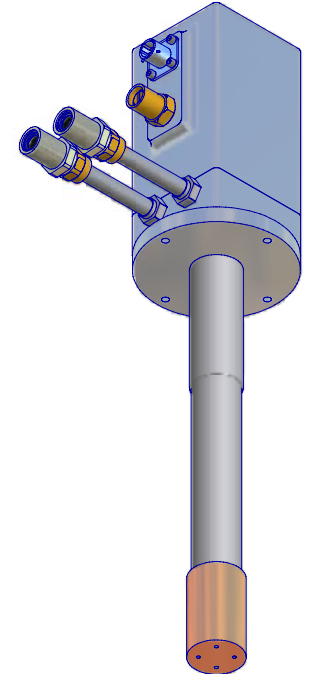


(2) HELIUM FLEX LINES 1/4" ID
STANDARD LENGTH: 10ft
OTHER LENGTHS AVAILABLE

1/4" AEROQUIP

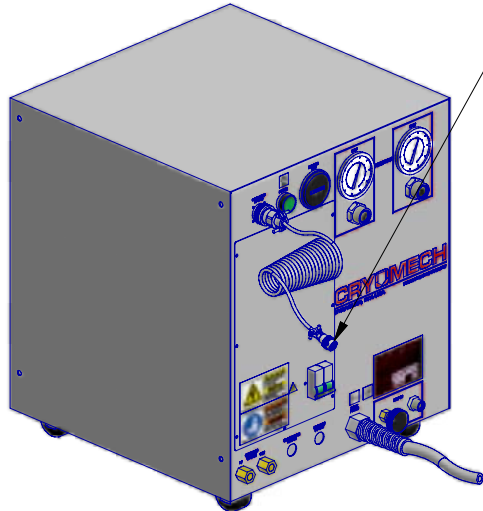
1/4" AEROQUIP

COLD HEAD
MOTOR CORD
(SAME LENGTH
AS FLEX LINES)



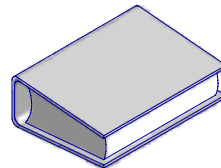
AL10 COLD HEAD

A

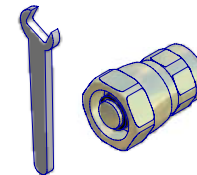


POWER CORD
CP810 COMPRESSOR PACKAGE
(WATER COOLED)

MANUAL



TOOL KIT



THIRD ANGLE PROJECTION

CRYOMECH, INC
113 FALSO DRIVE SYRACUSE N.Y. 13211
Tel: (315)455-2555 Fax: (315)455-2544

ALL DIMENSIONS ARE IN INCHES
TOLERANCES: FRACTIONS ±1/64 DECIMALS XXX=±.005 XX=±.01 X=±.1
ANGLES ±.5° ALLOVER FINISH 25 R_a
CONCENTRICITY .005 TOTAL INDICATOR RUN OUT
PERPENDICULARITY ±.002 (UNLESS OTHERWISE SPECIFIED)

NAME: AL10 CRYOREFRIGERATOR			
PART #: AL10 SYSTEM		SHT 1 OF 1	
MATERIAL: AS STATED			
DWN BY: BMR	DATE: 06JUN07	SCALE: TO FIT	DWG SIZE: A
1ST CHK: RED DATE: 06JUL07		2ND CHK: AO DATE: 10JUL07	
CUST: -			

1406	-	-	INITIAL RELEASE	06JUN07
ECN	ZONE	REV	DESCRIPTION	DATE