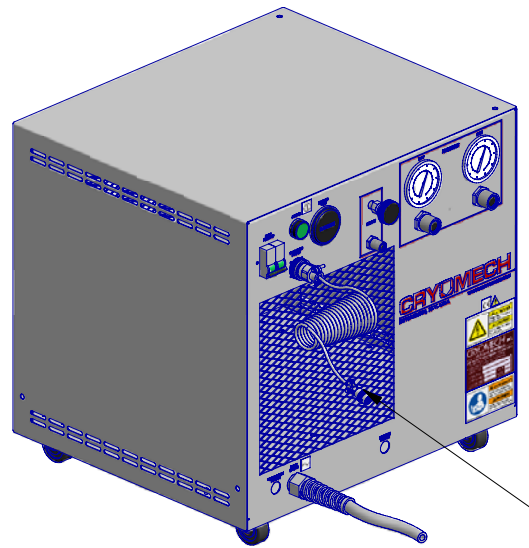
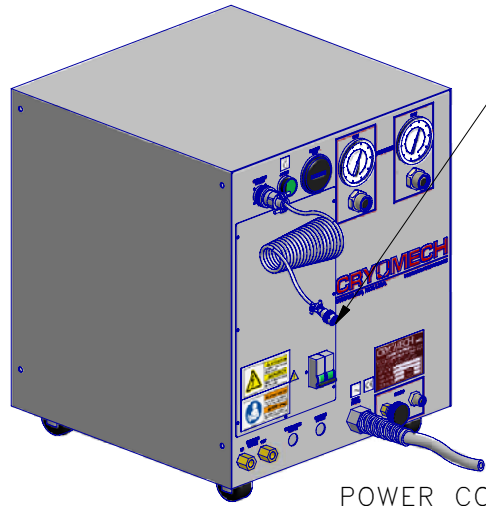


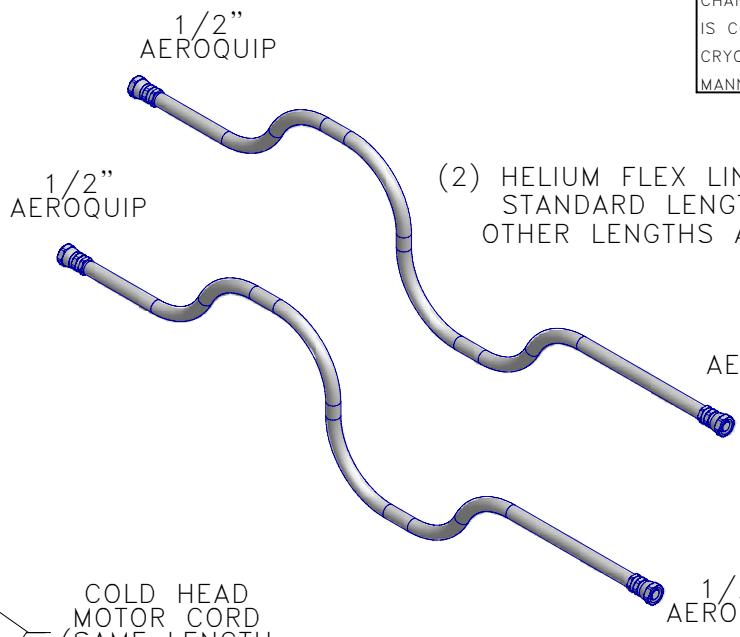
ALL INFORMATION CONTAINED IN THIS DOCUMENT SHOULD BE USED FOR REFERENCE PURPOSES ONLY & ARE SUBJECT TO CHANGE WITHOUT PRIOR NOTIFICATION. ALSO, THIS DOCUMENT IS CONSIDERED PROPRIETARY & THE SOLE PROPERTY OF CRYOMECH, INC. & SHOULD NOT BE REPRODUCED IN ANY MANNER WITHOUT PRIOR WRITTEN APPROVAL.



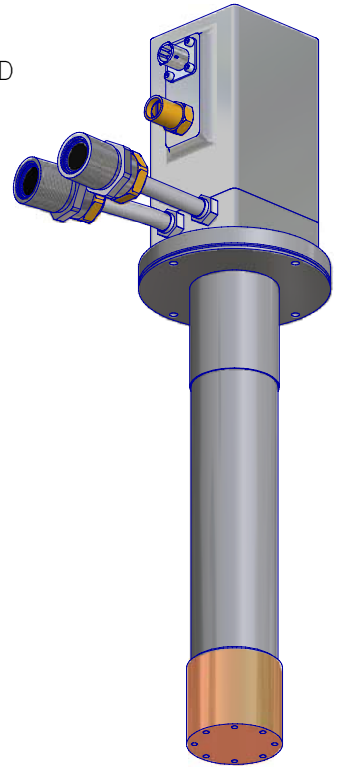
POWER CORD
CP830 COMPRESSOR PACKAGE (AIR COOLED)



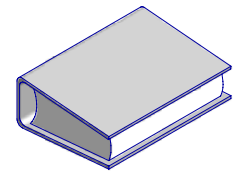
POWER CORD
CP830 COMPRESSOR PACKAGE (WATER COOLED)



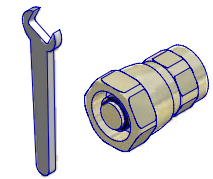
COLD HEAD MOTOR CORD (SAME LENGTH AS FLEX LINES)



MANUAL



TOOL KIT



THIRD ANGLE PROJECTION

CRYOMECH, INC
113 FALSO DRIVE SYRACUSE N.Y. 13211
Tel: (315)455-2555 Fax: (315)455-2544

ALL DIMENSIONS ARE IN INCHES
TOLERANCES: FRACTIONS ±1/64 DECIMALS XXX=±.005 XX=±.01 X=±.1
ANGLES ±.5° ALLOVER FINISH 25 R_a
CONCENTRICITY .005 TOTAL INDICATOR RUN OUT
PERPENDICULARITY ±.002 (UNLESS OTHERWISE SPECIFIED)

NAME: AL63 CRYOREFRIGERATOR			
PART #: S04-1063931		SHT 1 OF 1	
MATERIAL: AS STATED			
DWN BY: BL	DATE: 19JUL04	SCALE: TO FIT	DWG SIZE: A
1ST CHK: RED DATE: 03AUG04		2ND CHK: JPC DATE: 03AUG04	
CUST: -			

599	-	A	CHANGED FROM 2-D TO 3-D	28JUL04
ECN	ZONE	REV	DESCRIPTION	DATE